

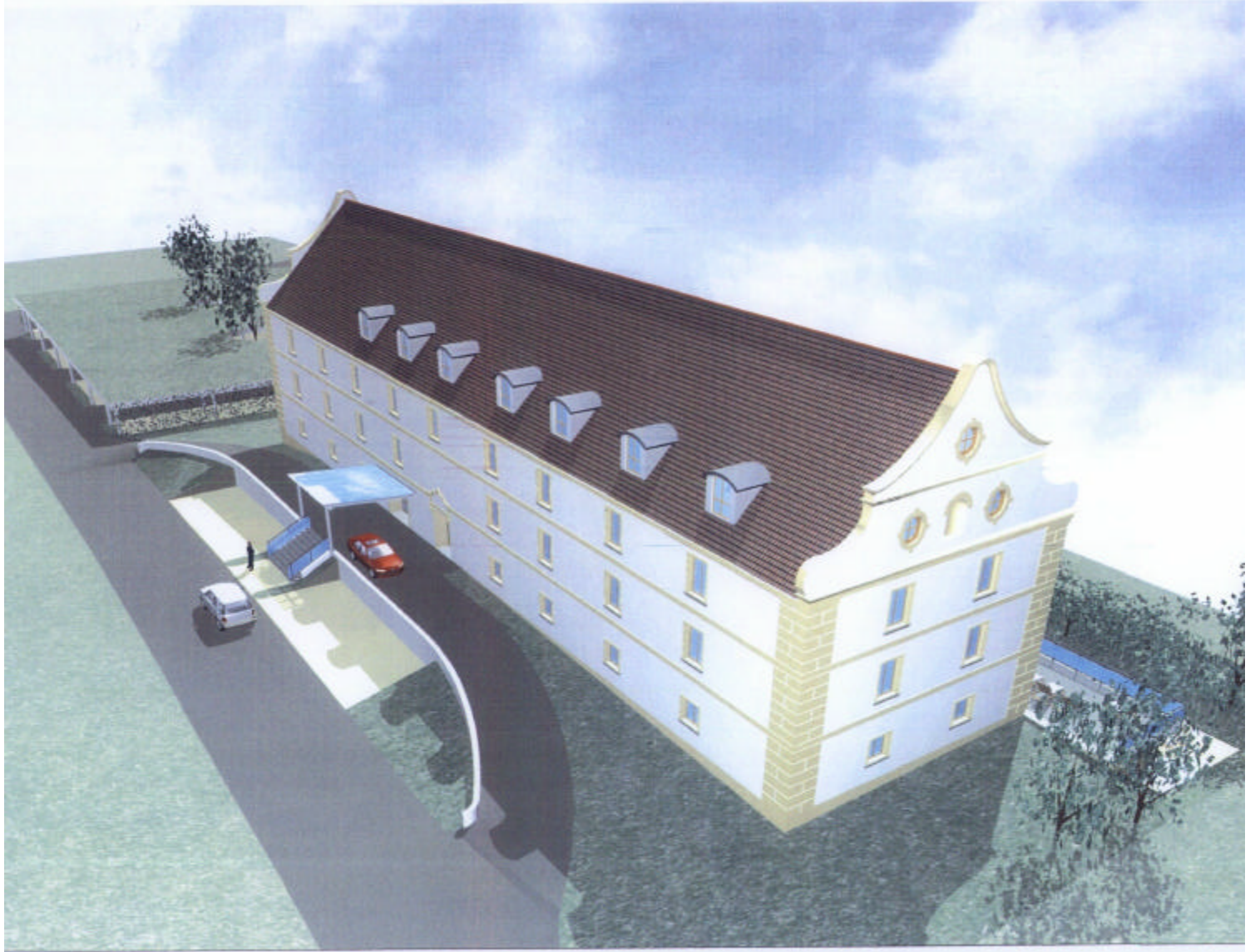
# Schüttkasten Drosendorf



EKTSTUDIE IT - AKADEMIE DROSENDORF (IAD)



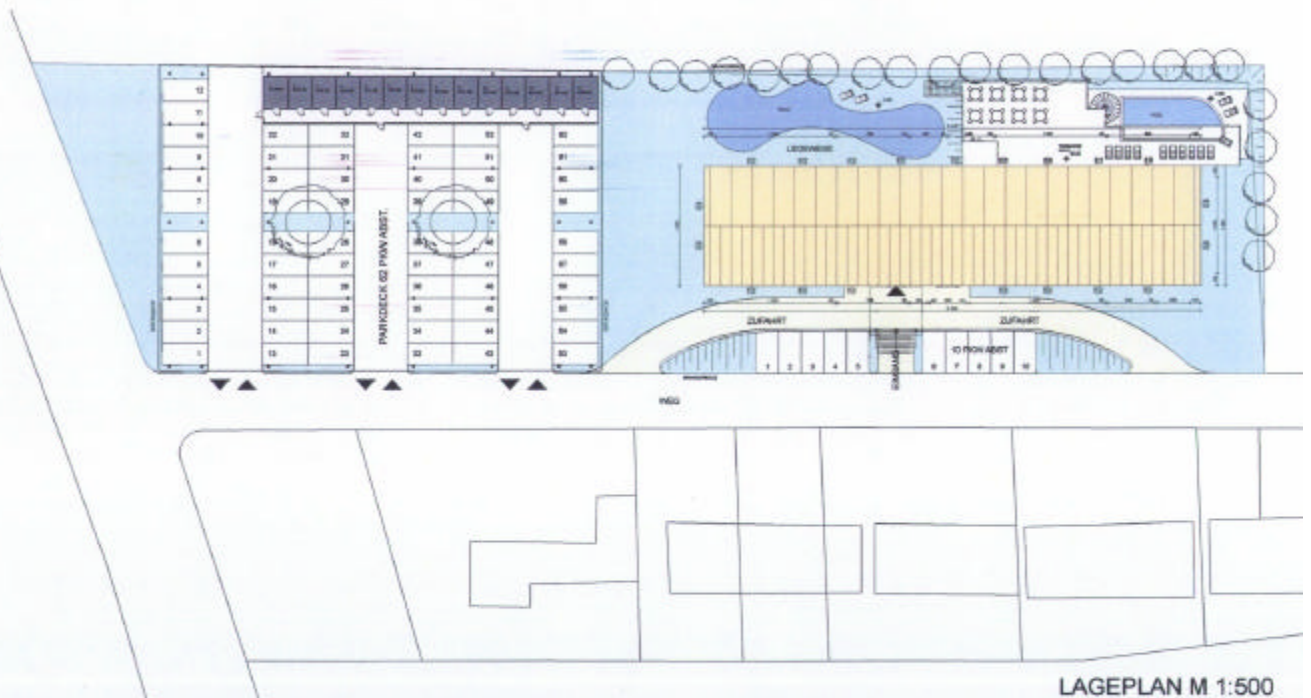
PROJEKTSTUDIE IT - AKADEMIE DROSENDORF (IAD)



# PROJEKTSTUDIE IT - AKADEMIE DROSENDORF (IAD)

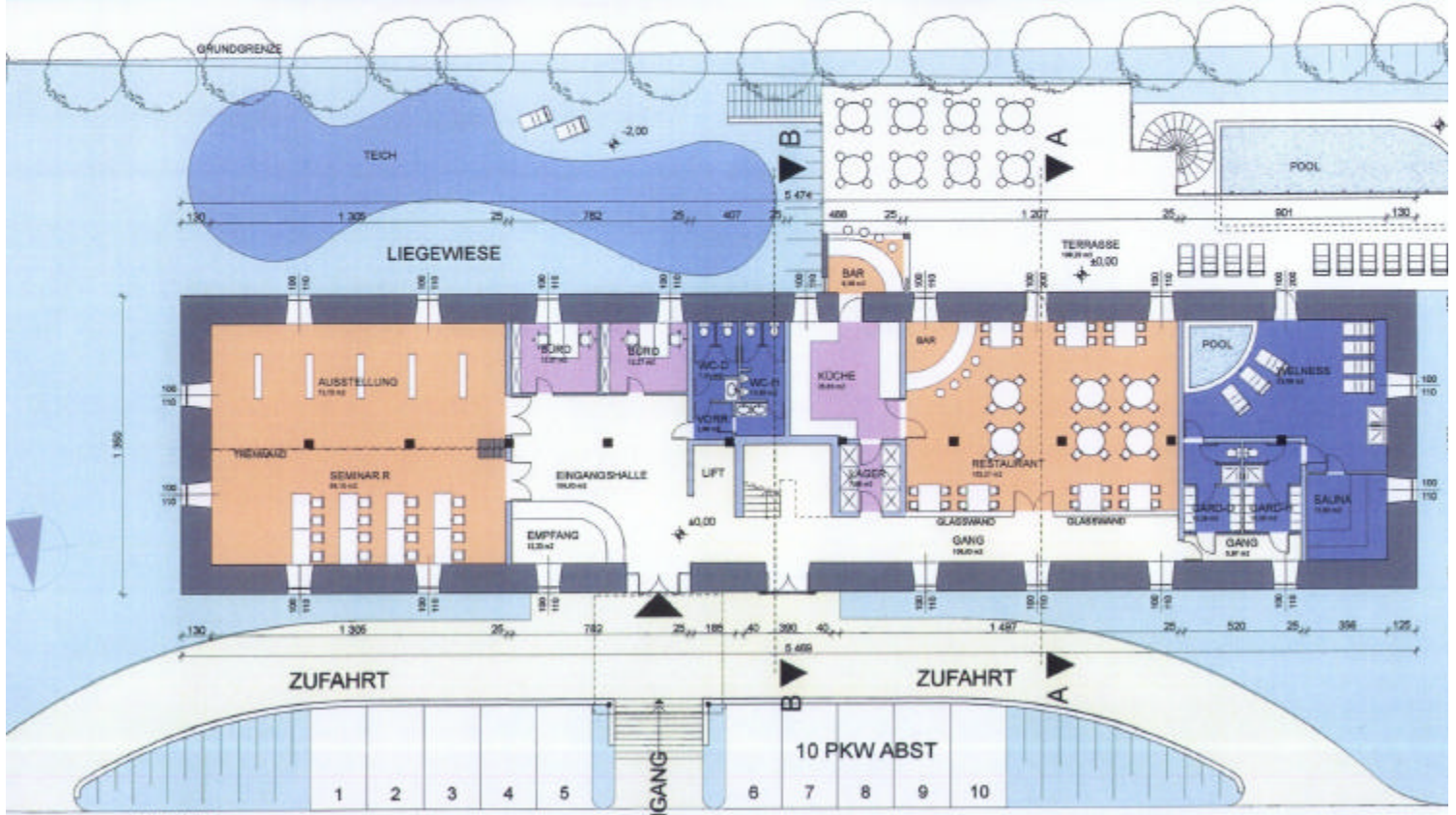


LÄCHE  
 i 549,35 m<sup>2</sup>  
 OG 427,34 m<sup>2</sup>  
 UG 500,33 m<sup>2</sup>  
 i 312,42 m<sup>2</sup>  
 E 1789,44 m<sup>2</sup>



LAGEPLAN M 1:500

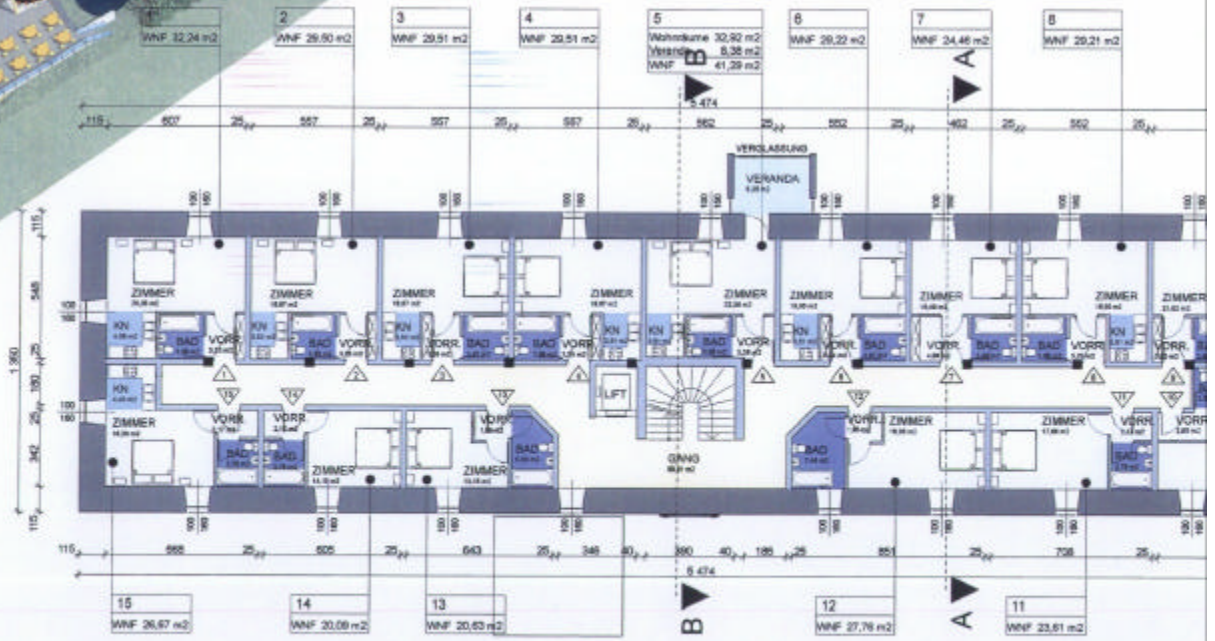
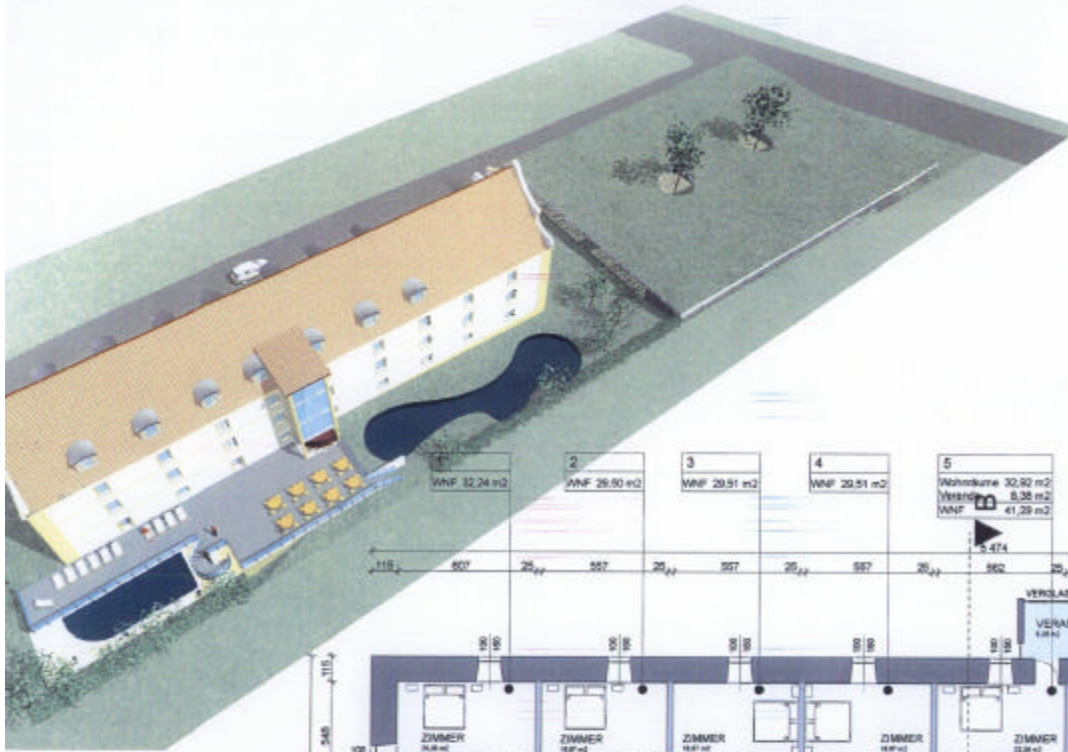
# PROJEKTSTUDIE IT - AKADEMIE DROSENDORF (IAD)



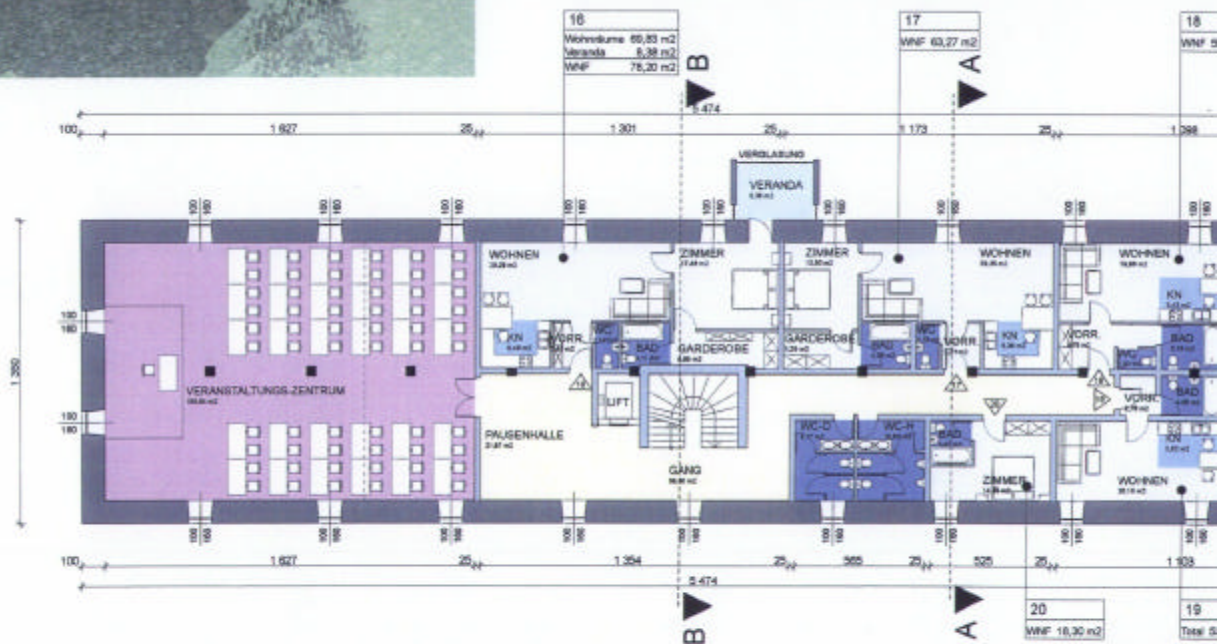
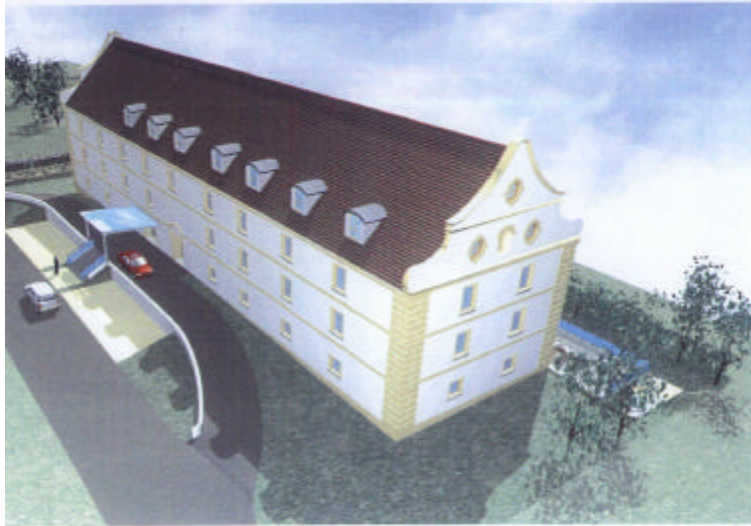
WEG

ERDGESCHOSS M 1:200  
NUTZFLÄCHE EG 549,35 m<sup>2</sup>

# PROJEKTSTUDIE IT - AKADEMIE DROSENDORF (IAD)

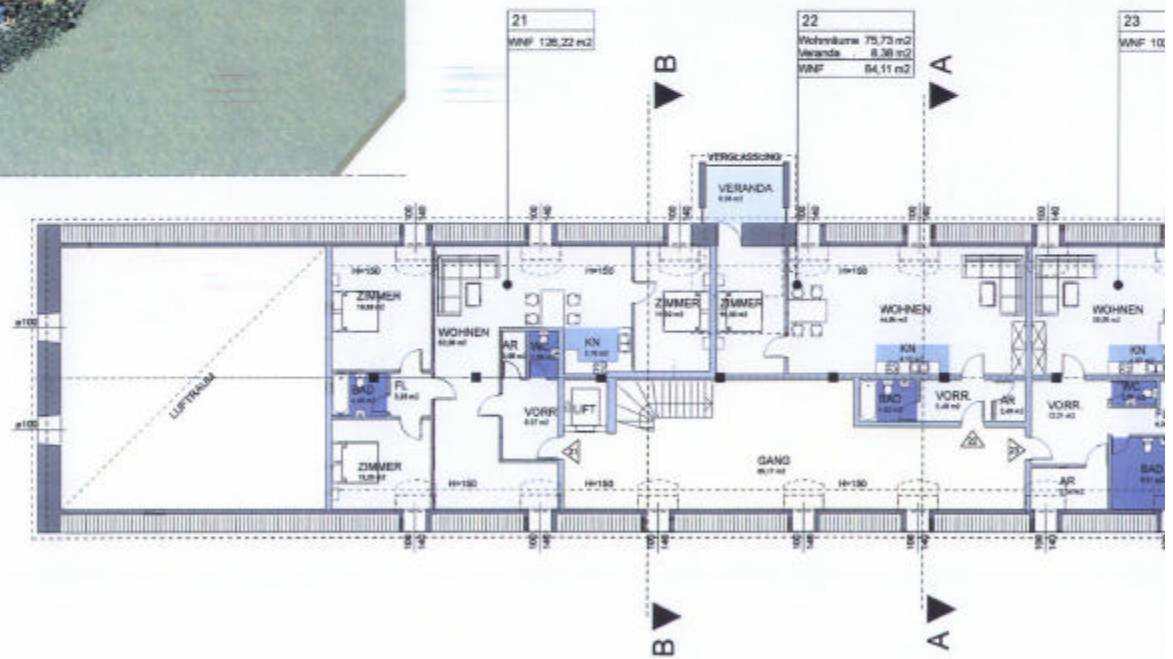


1. OBERGESCH  
NUTZFLÄCHE 1.



2. OBERGESCH  
NUTZFLÄCHE 2.C

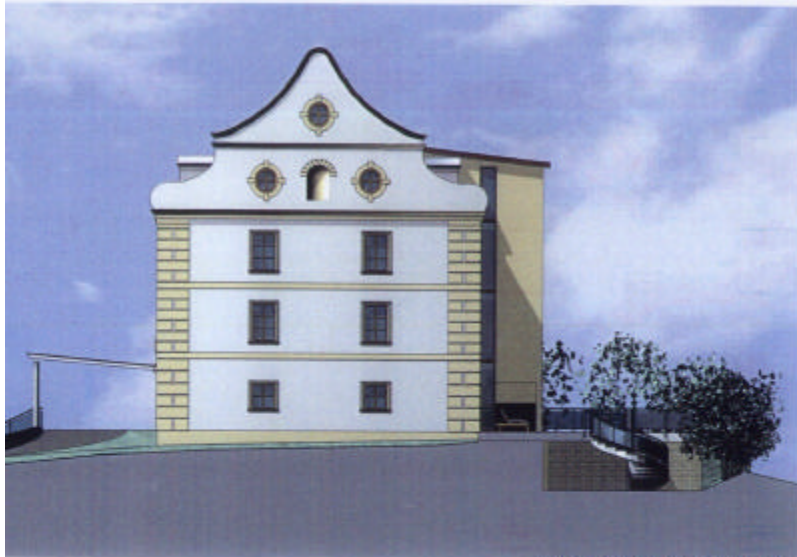
ARCHITEKT DIPL.-ING. MIROSLAW ZAWILA 1230 WIEN KOLPINGSTR. 1-7 HAUS C3



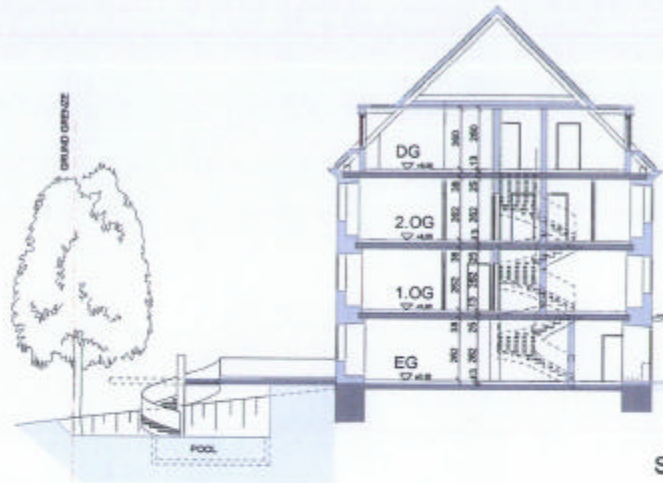
DACHGESCH  
NUTZFLÄCHE

ARCHITEKT DIPL.-ING. MIROSLAW ZAWILA 1230 WIEN KOLPINGSTR. 1-7 HAUS C3

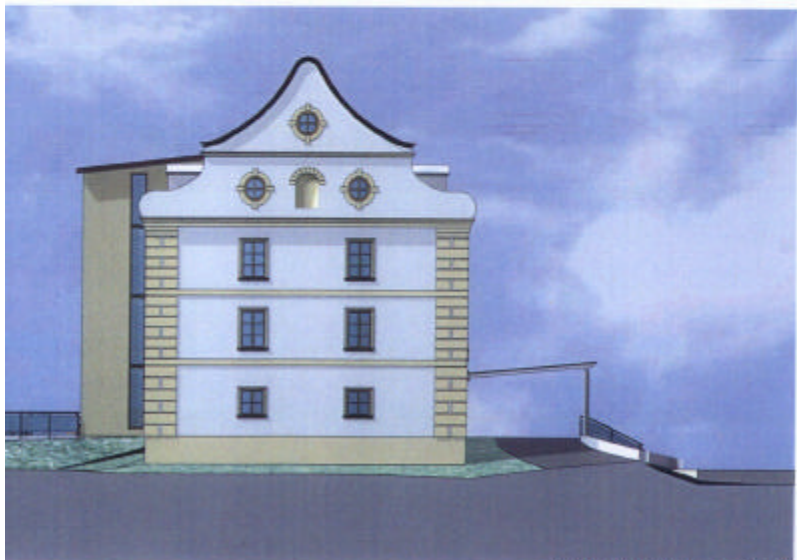




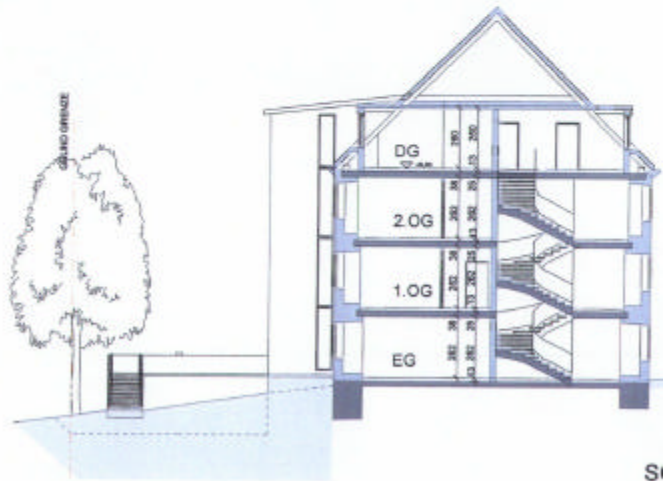
WEST ANSICHT M 1:200



6



OST ANSICHT M 1:200



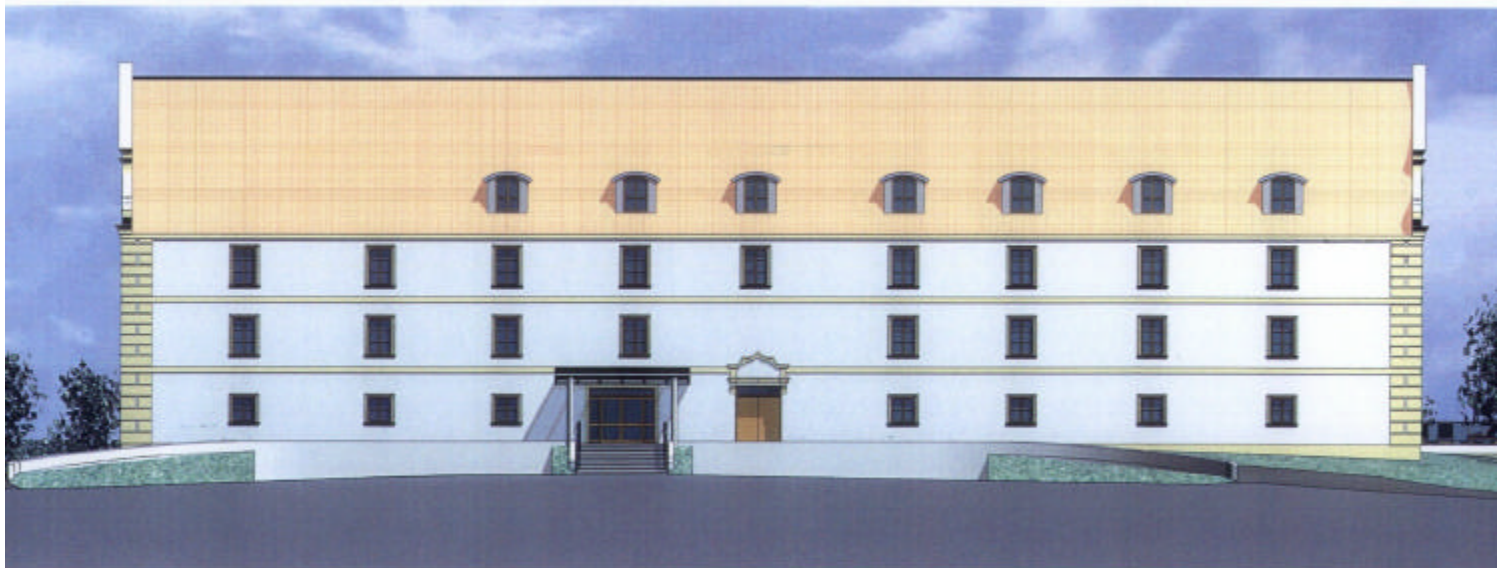
Si

ARCHITEKT DIPL.-ING. MIROSLAW ZAWILA 1230 WIEN KOLPINGSTR. 1-7 HAUS C3

PROJEKTSTUDIE IT - AKADEMIE DROSENDORF (IAD)



SÜD ANS



NORD ANS