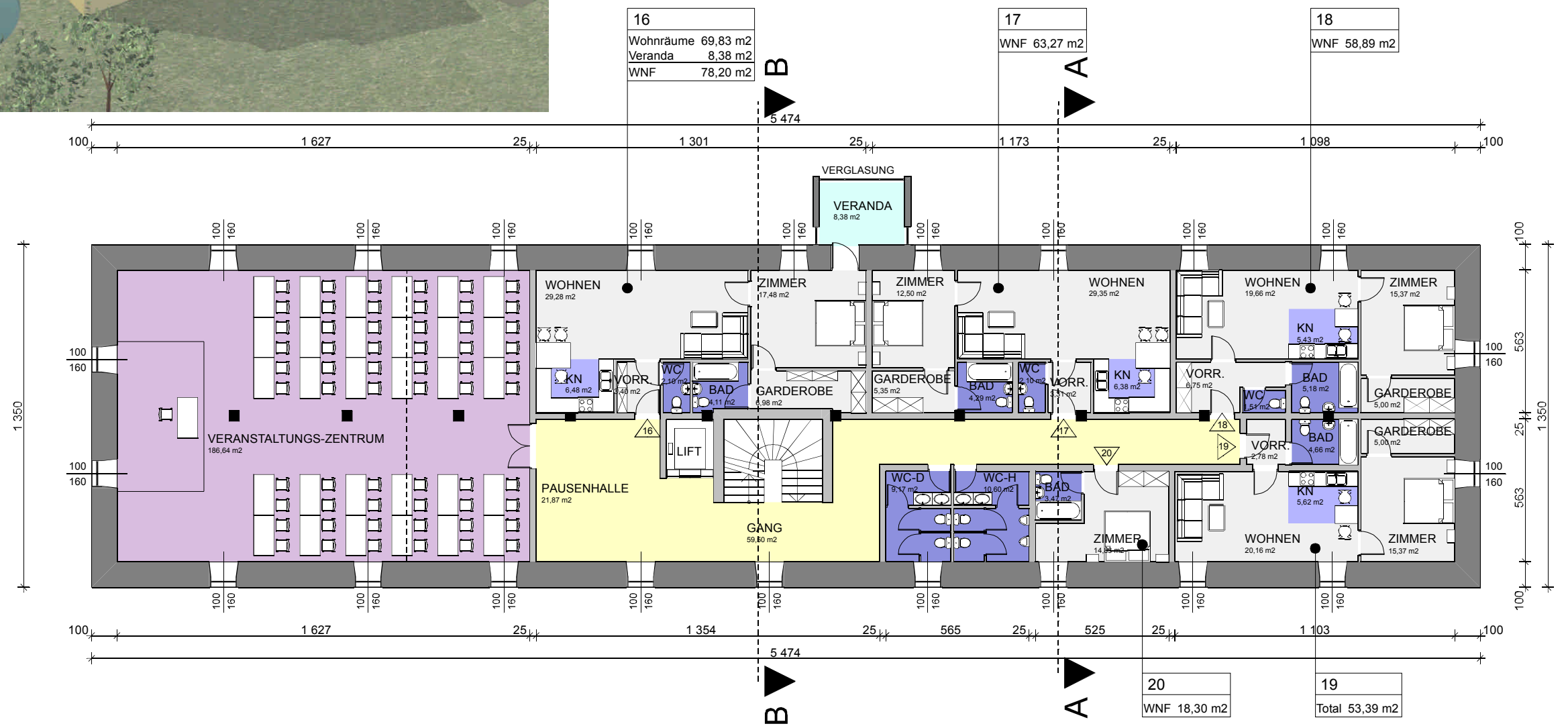




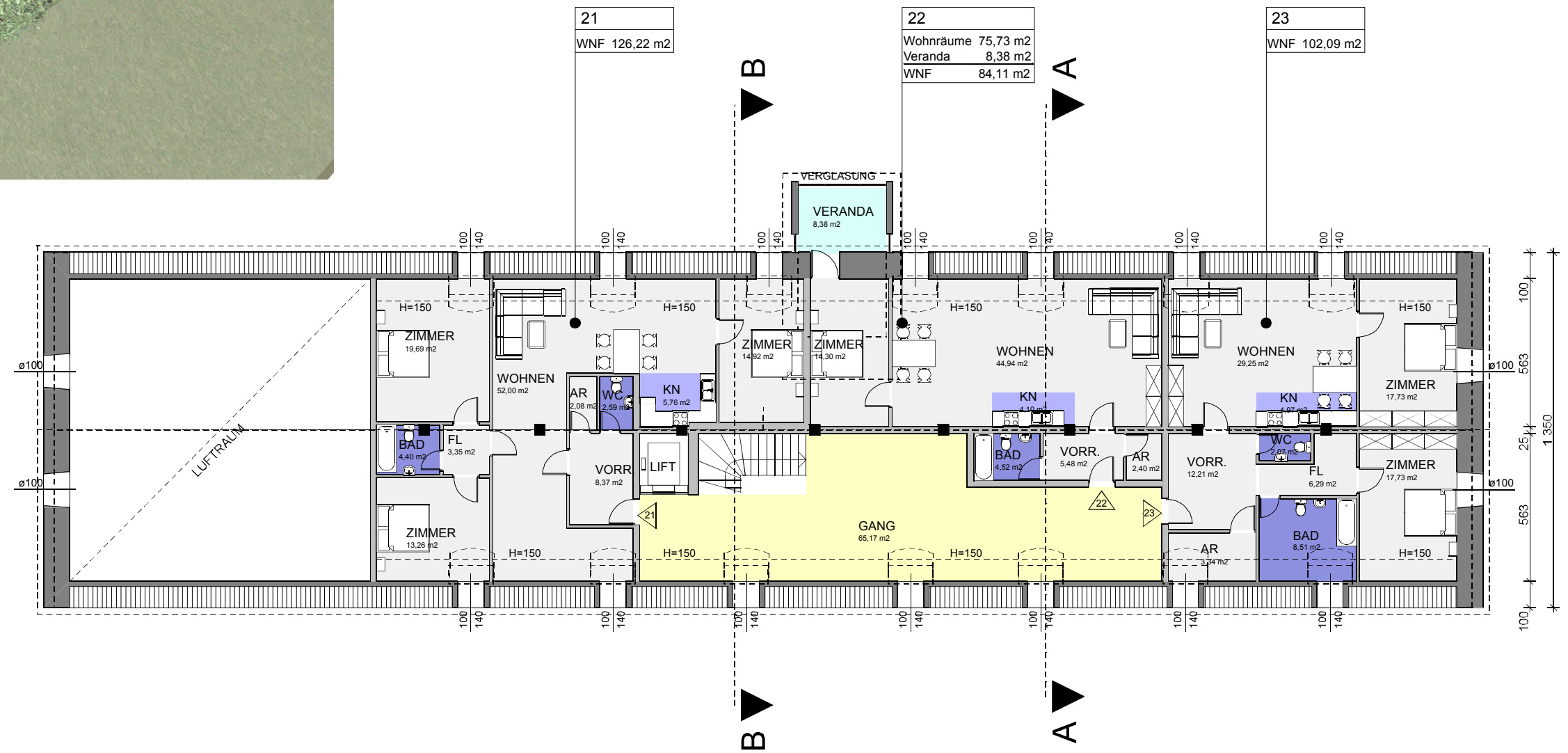


PROJEKTSTUDIE IT - AKADEMIE DROSENDORF (IAD)



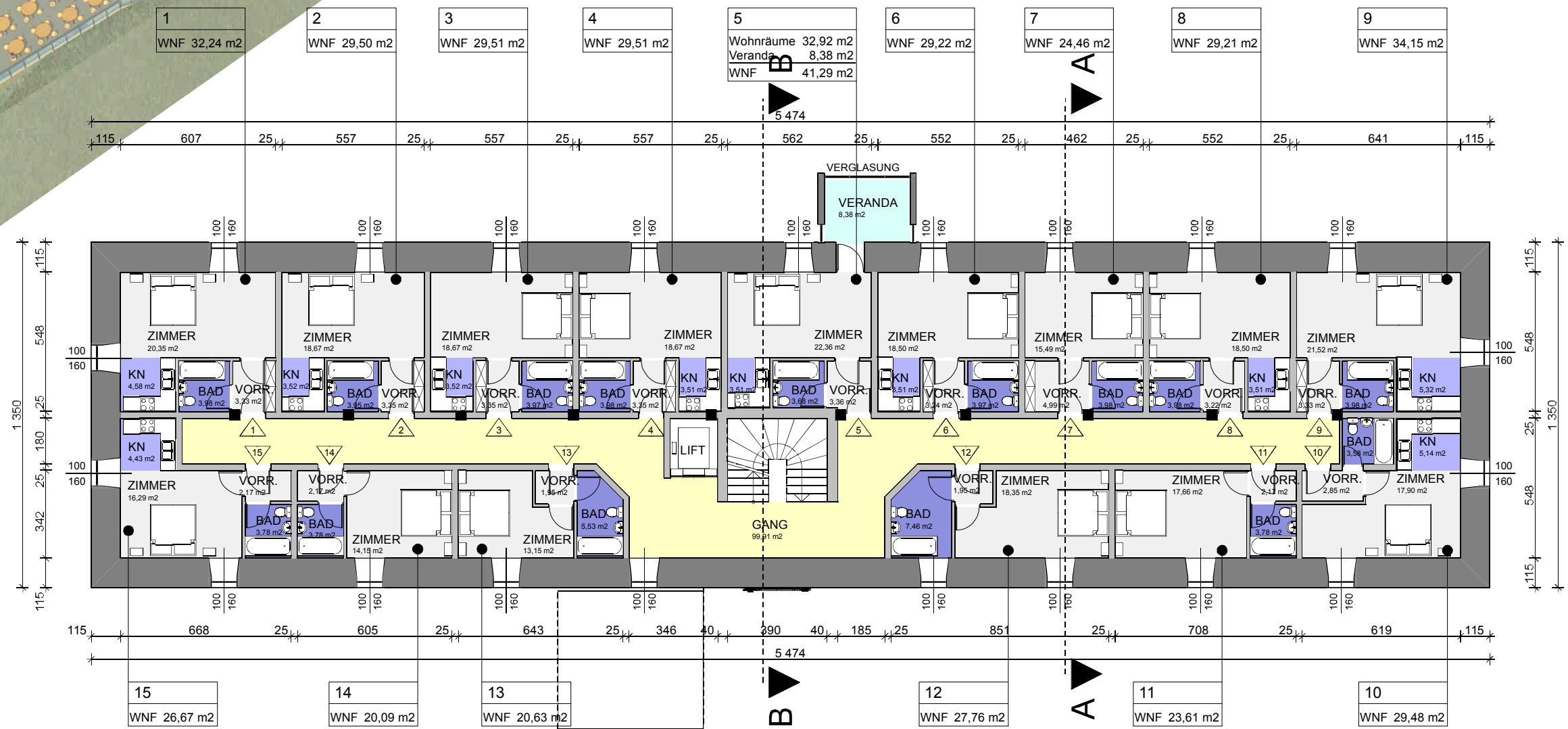
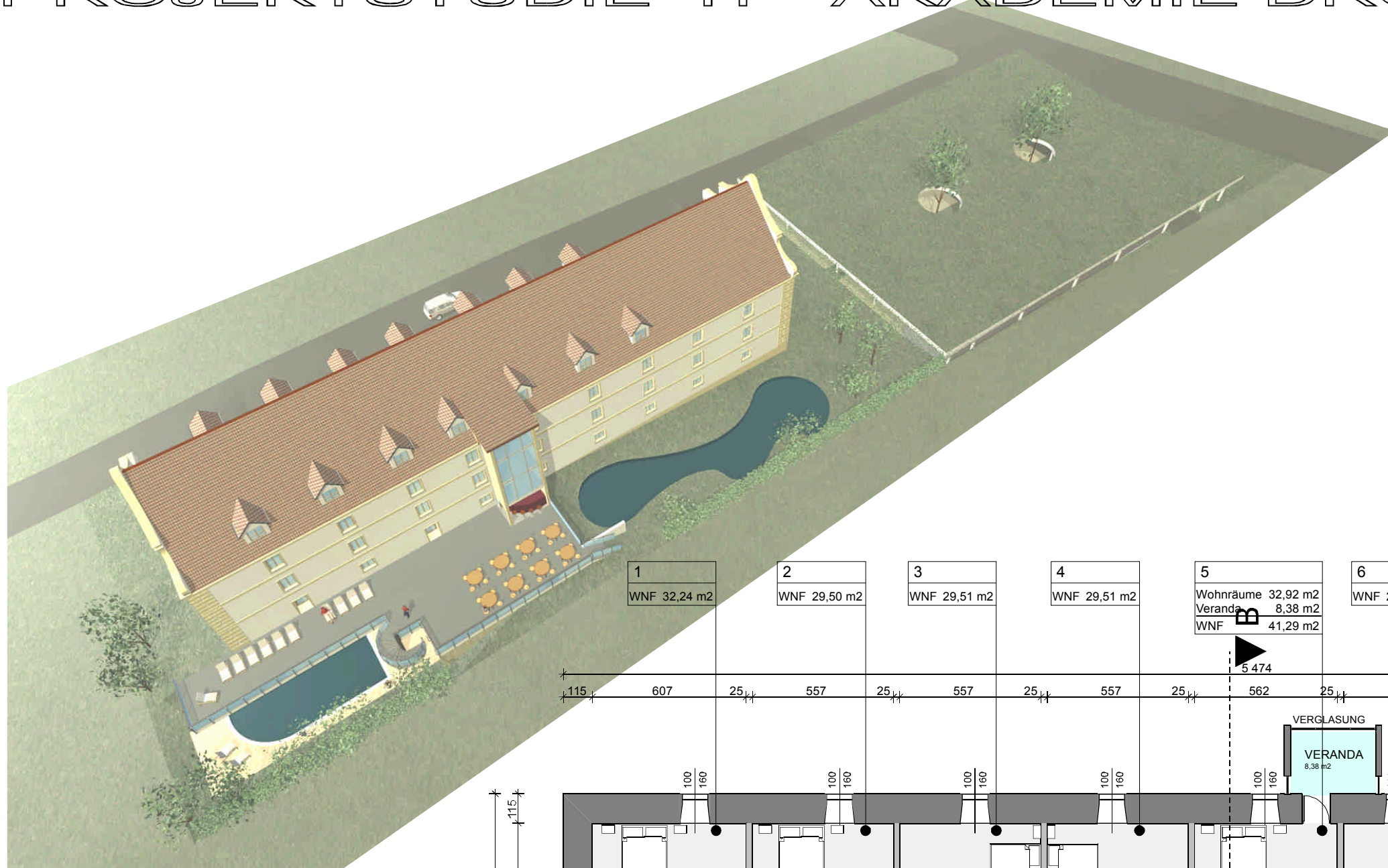
2. OBERGESCHOSS M 1:200
NUTZFLÄCHE 2.OG 500,33 m²

PROJEKTSTUDIE IT - AKADEMIE DROSENDORF (IAD)



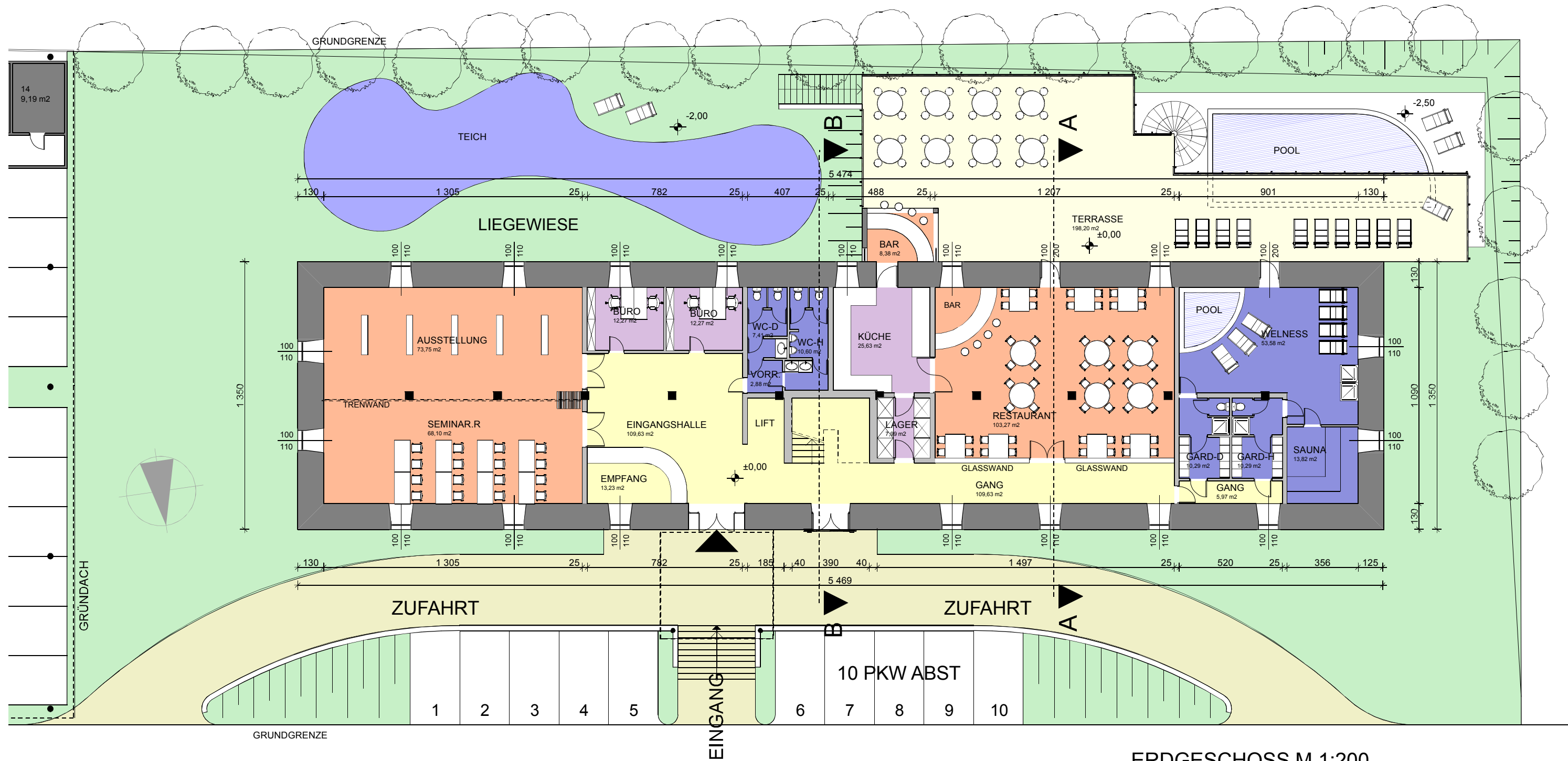
DACHGESCHOSS M 1:200
NUTZFLÄCHE DG 312,42 m²

PROJEKTSTUDIE IT - AKADEMIE DROSENDORF (IAD)



1. OBERGESCHOSS M 1:200
NUTZFLÄCHE 1.OG 427,34 m²

PROJEKTSTUDIE IT - AKADEMIE DROSENDORF (IAD)

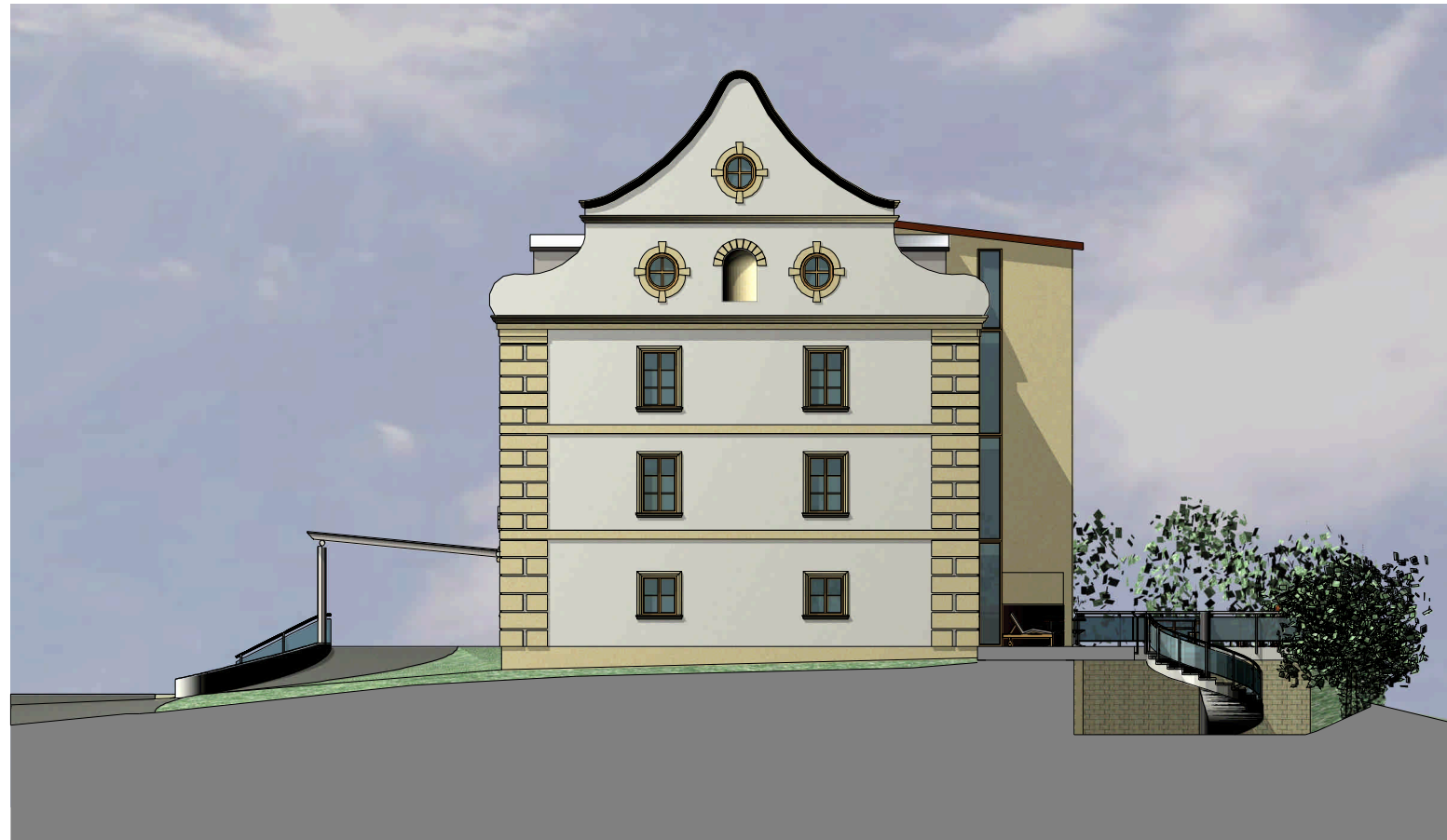


WEG

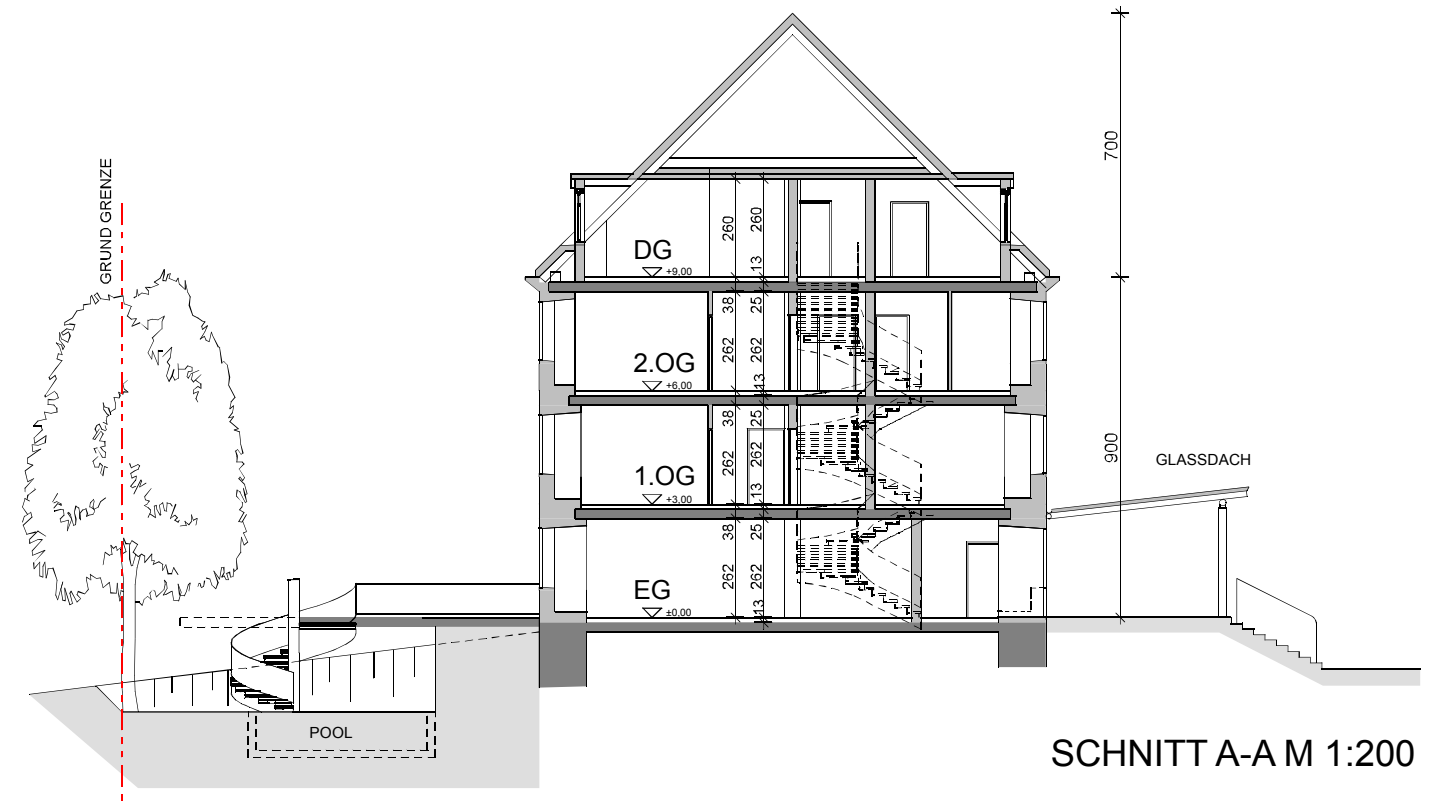
ERDGESCHOSS M 1:200
NUTZFLÄCHE EG 549,35 m²

ARCHITEKT DIPL.-ING. MIROSLAW ZAWILA 1230 WIEN KOLPINGSTR. 1-7 HAUS C3

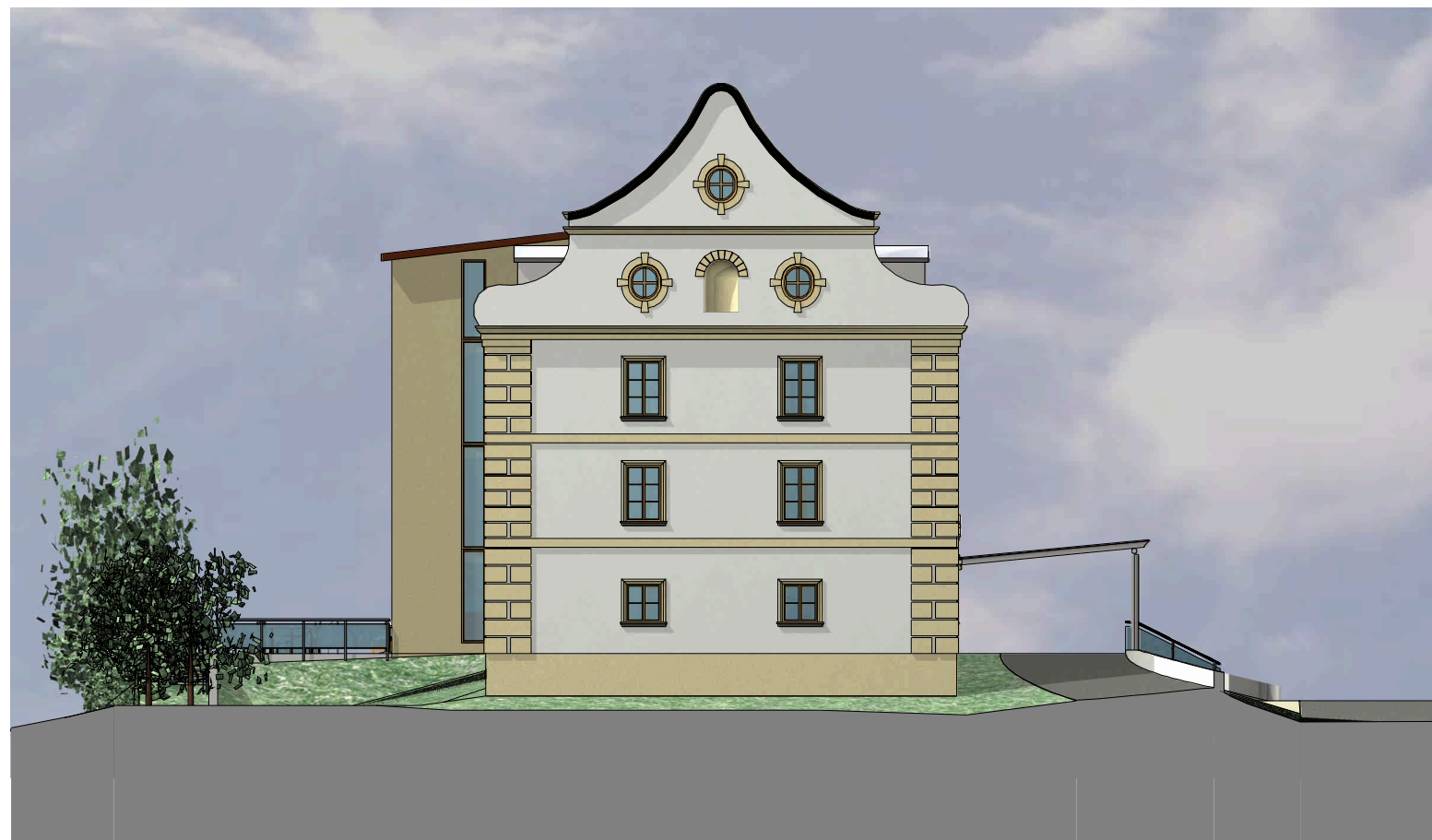
PROJEKTSTUDIE IT - AKADEMIE DROSENDORF (IAD)



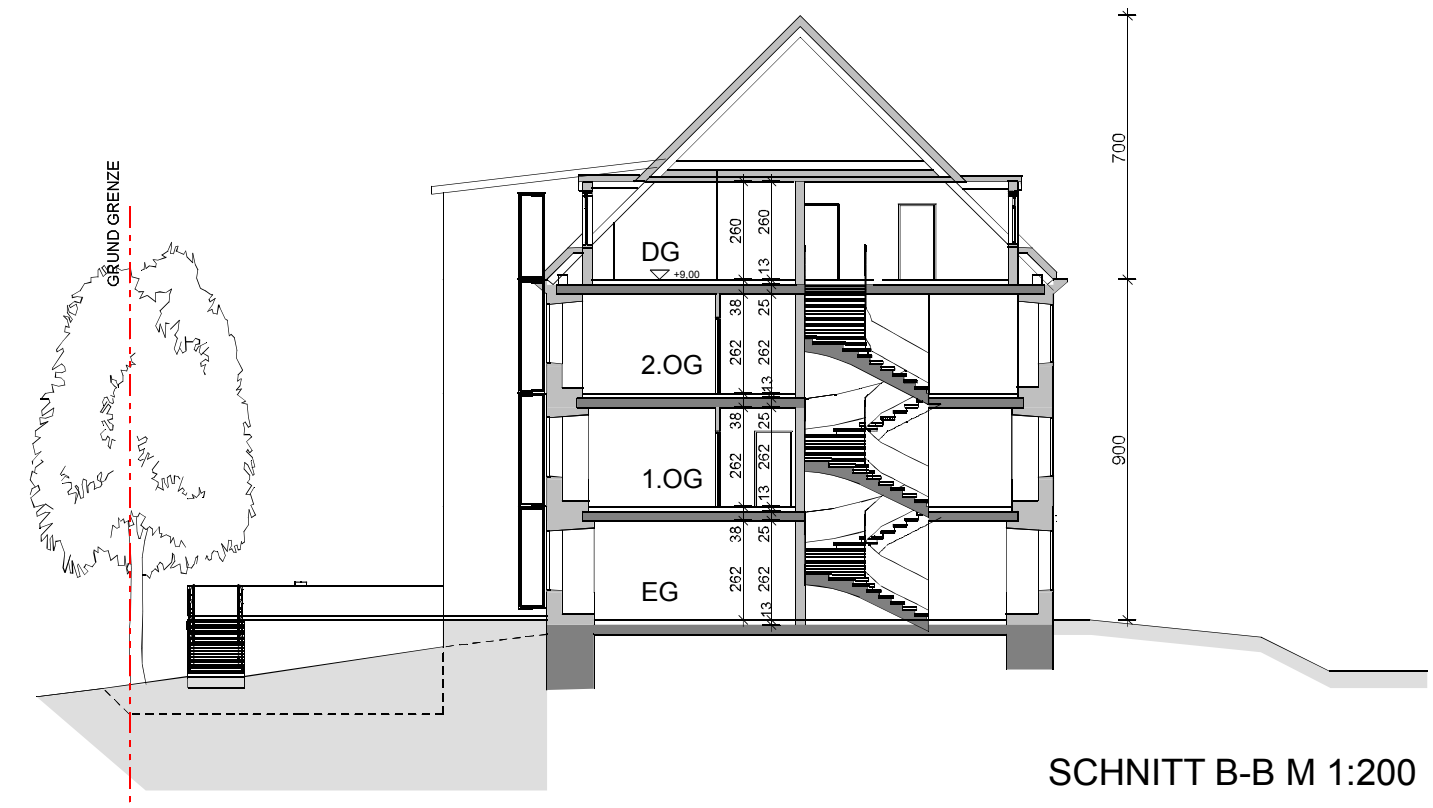
WEST ANSICHT M 1:200



SCHNITT A-A M 1:200

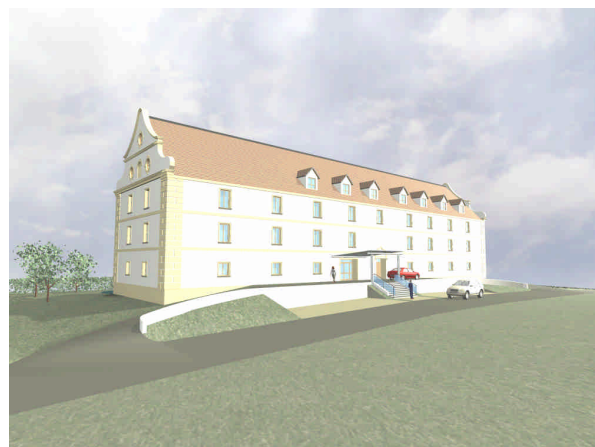


OST ANSICHT M 1:200

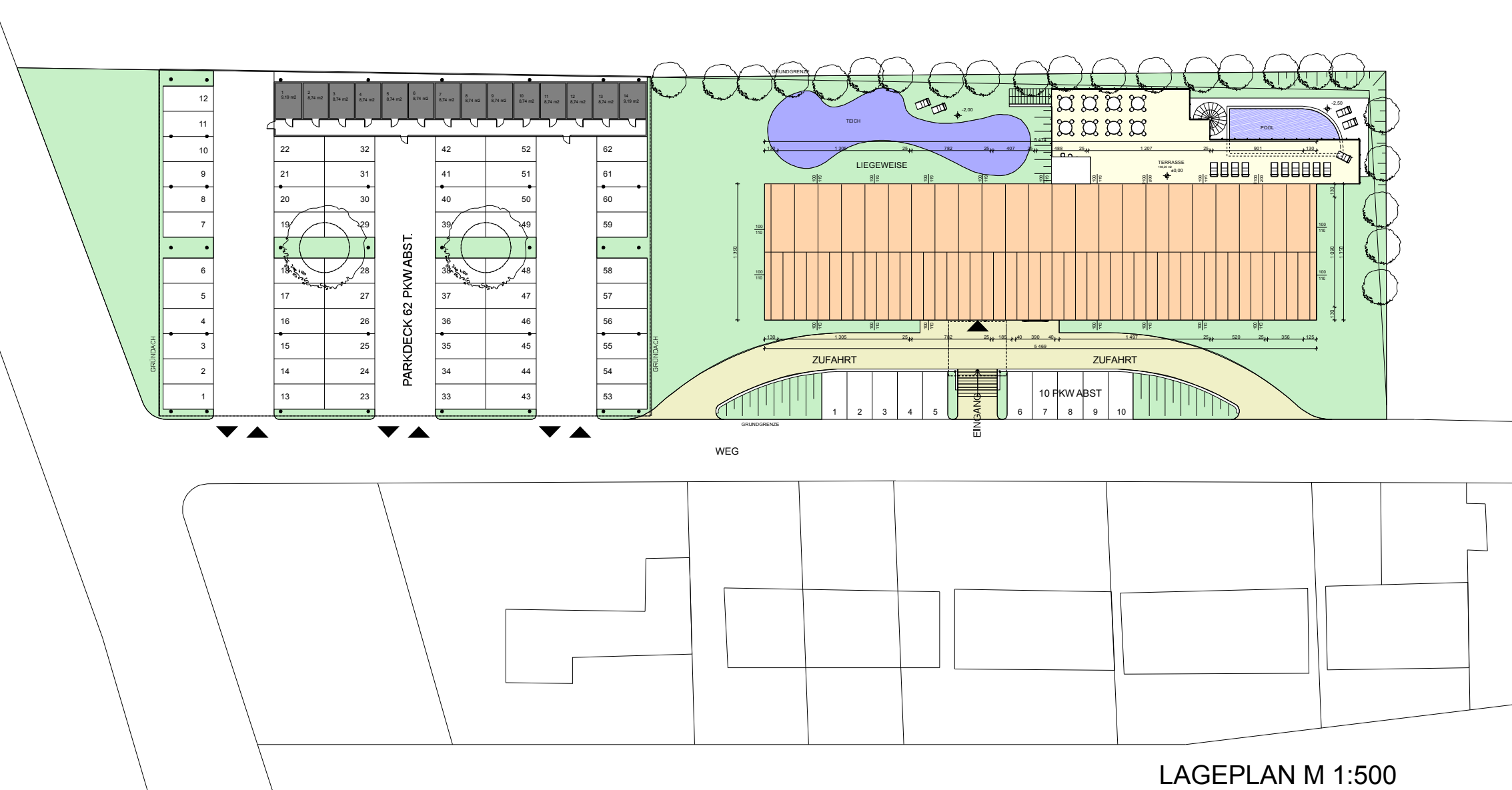


SCHNITT B-B M 1:200

PROJEKTSTUDIE IT - AKADEMIE DROSENDORF (IAD)



NUTZFLÄCHE
 EG 549,35 m²
 1.OG 427,34 m²
 2.OG 500,33 m²
 DG 312,42 m²
SUMME 1789,44 m²



LAGEPLAN M 1:500

PROJEKTSTUDIE IT - AKADEMIE DROSENDORF (IAD)



SUD ANSICHT M 1:200



NORD ANSICHT M 1:200